



SEN Information Report

2025 - 2026



ICPS Intent Statement

We are a values led school and are driven by our mission statement 'Child Centred Learning in the Heart of the Community'. With this in mind for all children, especially our SEN children, we will:

- Promote **equity**, ensuring that children have what they need in order to achieve
- **Believe** that all children can be the best that they can be
- Encourage **curiosity** in their learning
- Promote **bravery**, encouraging a 'have a go' attitude
- Offer **kindness**, recognising that learning can be tricky
- Promote **aspiration** by broadening the children's horizons

We aim to remove barriers to learning by giving our SEN children the time and support that they need. As a school we recognise parents as their child's first educator and seek to work together in order to meet their needs.

Definition of Special Educational Needs & Disabilities (SEND)



According to the SEND Code of Practice, 2014 on page 4

- 'A child or young person has SEN (Special Educational Needs) if they have a learning difficulty or disability which calls for special educational provision to be made for them. A child of compulsory school age or a young person has a learning difficulty or disability if they:
 - have a ***significantly greater difficulty*** in learning ***than the majority*** of others of the same age; or
 - have a disability which ***prevents or hinders them from making use of educational facilities*** of a kind generally provided for others of the same age in mainstream schools or mainstream post-16 institutions.'

This is reflective of children from the age of 0 - 25 years.



Areas of Need

The SEN Code of Practice identifies 4 areas of need:

- **Communication and Interaction Needs** – includes speech, language and communication needs as well as social communication and Autism.
- **Cognition and Learning Needs** - including dyslexia
- **Social, Emotional and Mental Health Needs**
- **Sensory and / or Physical Needs**

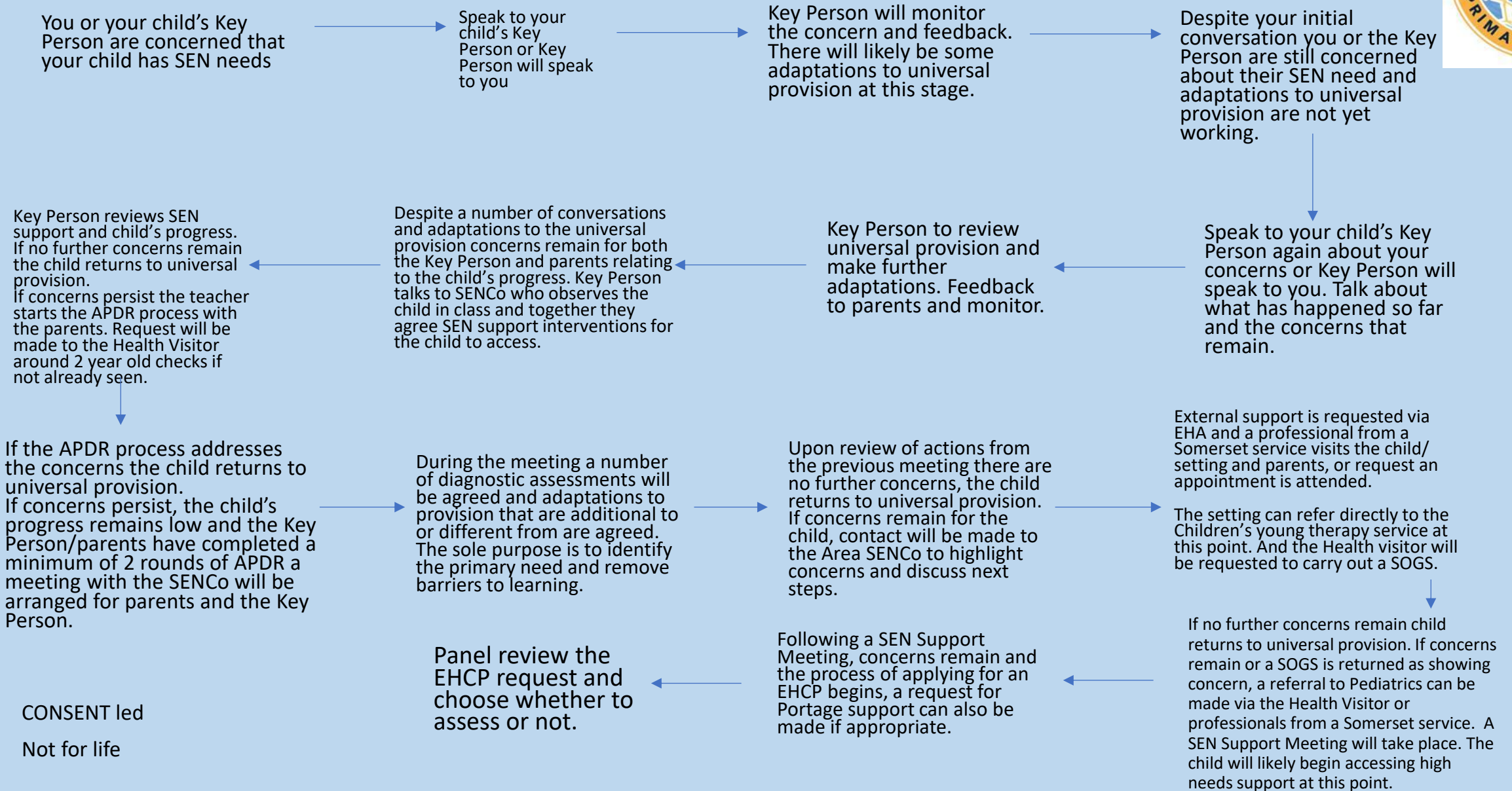
School will identify a primary area of need and often secondary areas of need that co-concur.



Who is responsible for SEND?

- **Everyone** who works at school is responsible for meeting the SEND needs of our children
- Contact your child's Key Person to raise initial concerns and discuss on-going in-class provision
- Or contact the SENCo, Mrs Emily Hague on 01935 840568 or via e-mail at earlyyears@ilchester.ppat365.org for any other concerns.

If you think your child has SEND needs





How do we identify a child's SEND needs?

- Observations of children's learning and behaviour in class and during unstructured times
- Through Pupil Progress Meetings and discussion with colleagues
- Through initial concerns raised by parents with the Key Person
- Through initial concerns raised by the Key Person with the SENCo



Communication & Information Sharing

Parents and carers can expect:

- Informal contact made by the Key Person
- Face to face meetings
- Phone calls
- Communication in writing
- Parents evenings across the academic year
- Feedback from Key Person regarding interventions and observations
- End of year reports
- Pre-School Entry Plan and review if SEND is identified on entry
- Reports from external professionals
- My EY SEND Support Review
- Pupil Passports and APDRs if your child is on the SEN register
- Annual Reviews of those children with an EHCP

How skilled are staff in supporting SEN children?



- All staff receive regular training
- Specific training is provided for interventions
- Support for all staff from SENCo
- SENCo has completed Local Authority Induction Training and has also completed Level 3 Early Years SENCo qualification.
- Staff are well versed in understanding Ilchester's unique circumstances with a high proportion of military families and the support required
- All staff are trained in the Relational Approach
- School have access to their own Family Link Worker
- Robust Pupil Progress Meetings happen each term
- Sometimes school may commission specialist external support
- School maintain strong links with other schools and providers
- Pre-School facilitate training and delivery of sessions from Speech and Language Therapy and Occupational Therapy
- Good professional relationships are held so advice is easily sought.



Types of provision

Provision is the type of support your child receives. This support can take many different forms as not all children with SEND will need the same type of support.

- **Universal** (provision available to all children)
- **SEN Support** (provision for children who require adaptations that are additional and different to universal provision)
- **High Needs** (personalised provision)

Pre-School are expected to make reasonable adjustments when creating their SEN support offer.



Universal Provision

Examples of Universal Provision at Ilchester are listed below:

- Quality First Teaching
- Differentiated tasks
- Manipulatives and support resources such as double handed scissors, twist and write pencil etc
- Access to technology
- Inclusive classroom environments
- Visual prompts and timetables
- Positive praise and clear boundaries
- Pre-School responsibility (cleaning out pets)
- Unstructured times e.g. playtime



SEN Support Provision

Examples of SEN Support Provision at Ilchester are listed below:

- APDRs
- Targeted Interventions
- Specialist Assessments / Testing
- Individual resources e.g. Word boards, attention bucket etc
- Ratios mat at all times
- Early Help for families e.g. HV referral
- Implementation of OT or SALT plans



High Needs Provision

Examples of High Needs Provision at Ilchester are listed below:

- Support in class from a 1:1 where viable
- Individualised timetable
- Highly personalised curriculum
- Access to alternative provision
- Specialist external support
- Behaviour support plans



How does the school monitor progress?

- Day to day assessment for learning that leads to adaptations
- Provision plans
- APDRs for identified SEN children
- Pupil progress meetings termly with a focus on SEN children's progress
- Specialist assessments outside of the curriculum
- Intervention logs
- Pre-School Entry Plan Meetings and reviews
- SEN Support Reviews
- SEN register monitored and tracked, especially for those raised of initial concern



Transitions and Handover

When transitioning be it an in school transition or a move to another school children can expect:

- Additional transition days offered to vulnerable learners
- Additional visits to the classroom or Key Person for vulnerable learners
- Transition books / visuals offered
- Pre-School Entry Plan Meetings
- Early EHCP Annual Reviews for phase transfer years (Pre-School to Year R, Year 2 to Year 3 and Year 6 to Year 7)
- Thorough handover meetings
- New APDRs written in the summer term to remain in place for the beginning of the autumn term



Which Agencies do Pre-School Work with?

- Area SENCo Team
- Health Visiting Team
- Portage Practitioners
- Transition Workers at The Virtual School (Formerly CAOT)
- Physiotherapist
- Speech and Language Therapy
- Occupational Therapy
- Children and Young People Specialist Service (previously SPOT)
- Military Welfare
- SEN Navigators
- Young Minds
- South Somerset Partnership School
- Family Intervention Service
- Children with Disabilities team
- Sensory Service for Children with Visual or Hearing Impairments.
- Community Nursing Team



Support Available for Families

Special Educational Needs and Disability Information and Advice Service (SENDIAS)

01823 355578 info@somersetSEND.org
www.somersetSEND.org.uk

Children's Autism Outreach Team (CAOT)

CYPspecialistservice@somerset.gov.uk

Health Visiting Team – Yeovil

0300 323 0118
yeovilhealthvisitor@somerset.gov.uk

Health Visiting Team – Langport and South Petherton

03007906839 SouthsomersetHV@somerset.gov.uk

Integrated Therapy Service for Children and Young People

Charter House
Bartec 4
Lynx West Trading Estate, Watercombe Lane
Yeovil
Somerset
BA20 2SU
01935 848246

Somerset Local Offer

www.somerset.gov.uk/children-familiesand-education/the-local-offer/

Somerset Graduated Response Tool

<https://www.somerset.gov.uk/children-families-and-education/the-local-offer/education/graduated-response/>



What to do if you have a concern

- Initial concerns are shared with you child's Key Person and then their phase leader. Should you feel you need more information then...
- See the SENCo (Mrs Emily Hague). Should you feel you need more information then...
- See the School SENCo (Mrs Louise King)
- See the Head Teacher (Mrs Michelle Mordue) or SEND Governor (Mrs Carolyn Rouse). If you still require further assistance then...
- Contact the Local Authority (see SEND Policy)



Further Information

- [SEND Code of Practice: 0 to 25 Years](#)
- [School Safeguarding Policy](#)
- [National Autistic Society](#)
- [British Dyslexia Association](#)
- [I Can Speech and Language](#)